

## Mr. Pig Massive Fire Reflector Assembly Instructions

The Mr. Pig Massive Fire Reflector consists of 5 panels. Each panel is 26  $\frac{3}{4}$  X 59  $\frac{1}{2}$ .

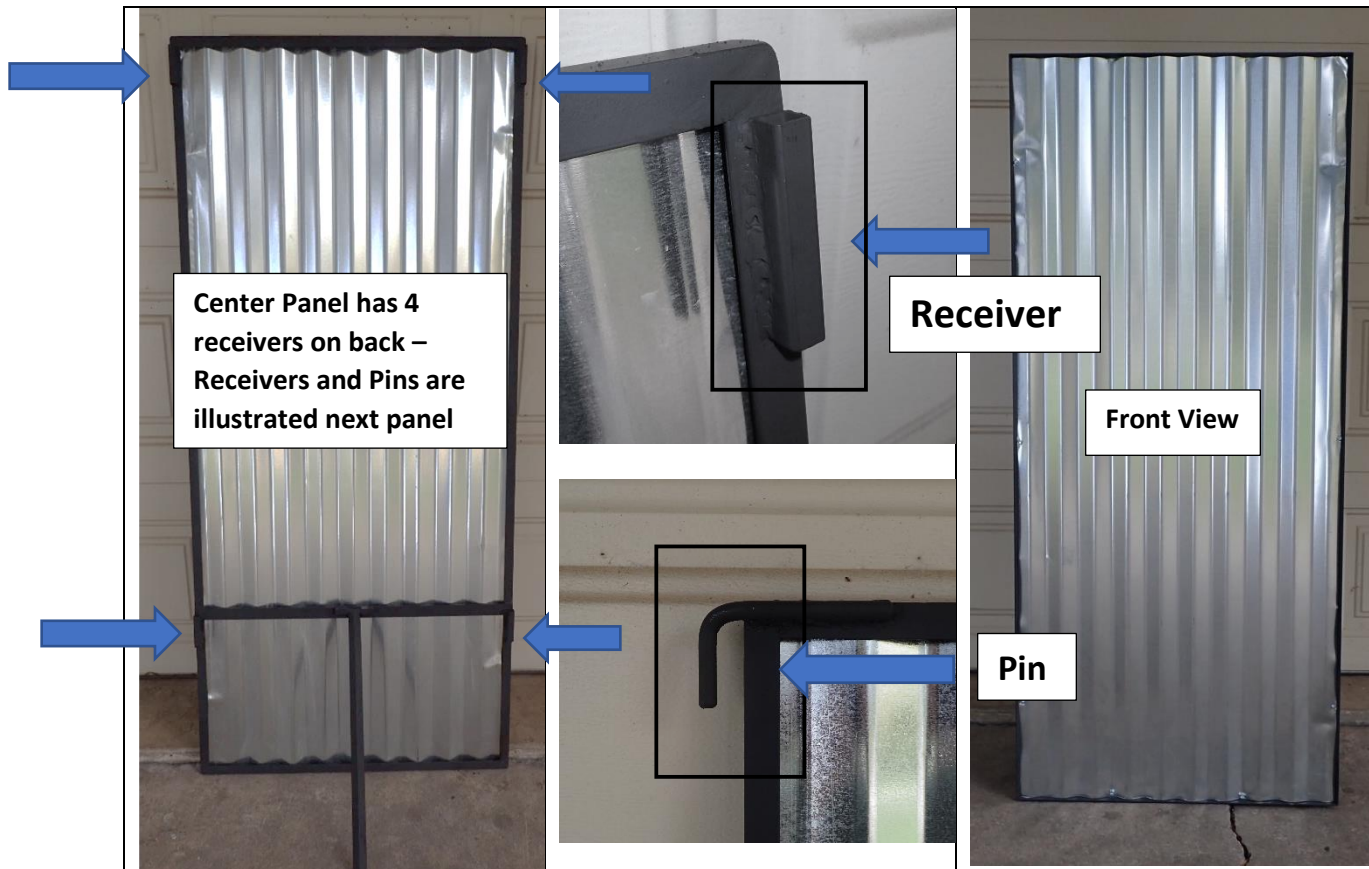
The Center Panel has 4 “receivers” on the back. Only the Center Panel has 4. Use the folding leg to stand it up until you get the second piece. It is best to have a second person to hold the middle panel in place while the second panel is readied to set.

### IT ONLY GOES TOGETHER ONE WAY

The panels on either side of the center panel have a “receiver” just like the center panel on the side, and a pin that attaches to the center panel on the other. The bottom pin inserts first and the top pin is  $\frac{1}{2}$ ” shorter. **CAUTION:** Each panel is rotated on the pin so the angle iron meets and makes a tight connection.

#### Center Panel

The side panels attach to this center panel.



## 1<sup>st</sup> Side Panel Attachment

Pins on the separate side panels attach to the center panel. Either side can be attached first.



## 2nd Side Panel Attachment – Either Side is OK



**Front Panel Either Side – Pins only – No Receivers on these Panels**



# Final Panel



## Ready for a Cooking Fire



**Stability Legs**



## Mr. Pig Ultimate A Frame Assembly Instructions

The Ultimate A Frame is designed for portability. Each leg consists of two pieces that slip inside one another. The Top Cross Bar is made up of three pieces. Center piece, and two outer pieces.

**First, lay out all pieces**



## Top Bar Assembly

The outside pieces slip inside the center bar



## Complete Center Bar



**Legs and Side Reinforcing**



**Set up angles as shown**





**Legs attach to cross bar**



**Ready to attach side reinforcing**



**One Side Extended Legs – Attach side reinforcing bars as you extend the legs**



**Legs extended on both sides – Tighten up bolts and the Ultimate A Frame is ready.**

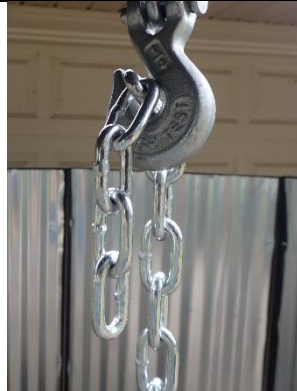
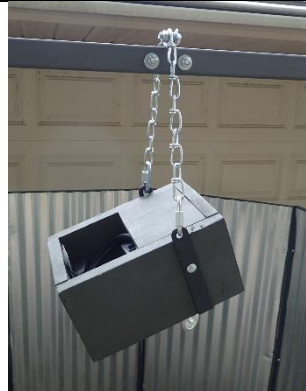
## Mr. Pig Roto Box



**The Roto Box comes complete  
No Maintenance**



**Attach the chain over the top bar  
of the A Frame**



**Chain for Meat  
Basket**



**Meat Basket  
hangs from the  
bottom of chain**

**Mr. Pig XL Air Roaster Complete**

